

Welcome to the **NAN2** circuit ride, a 22km ride suitable for mountain bikes, hybrids and gravel bikes. It is hilly in a few areas so allow 2 hours to complete for a relaxed ride.

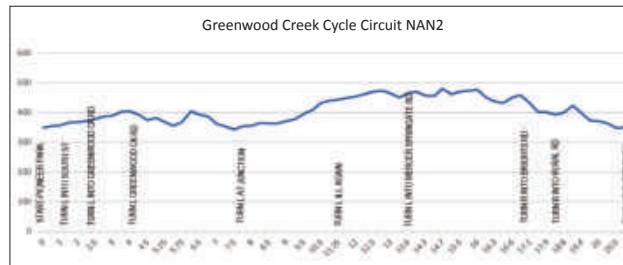
The ride leaves from Pioneer Park and goes through the south east part of town to Greenwood Creek Rd. This area was part of the Taromeo Soldiers Settlement Scheme established after World War I. These blocks were about 80 acres in size and the roads bear the names of some of the original settlers.

Greenwood Creek Rd has a short, sharp ascent then a downhill to meet the edge of East Nanango State forest which has a



wonderful mix of pine trees, bird life and a history of gold mining as well. The road traverses a ridge to reach Snowy's Knob, the high point in the ride. It has magnificent views from the Mt Stanley ranges (source of the Brisbane River) in the east, to Tarong Power Station and to the Bunya Mountains in the West.

There is some lovely descents down Brights Rd and Rural Rd back into Nanango township where the ride ends. There are plenty of cafes and accommodation to enjoy your stay in Nanango. Just follow the **NAN2** signs and enjoy the ride.



Proudly supported by

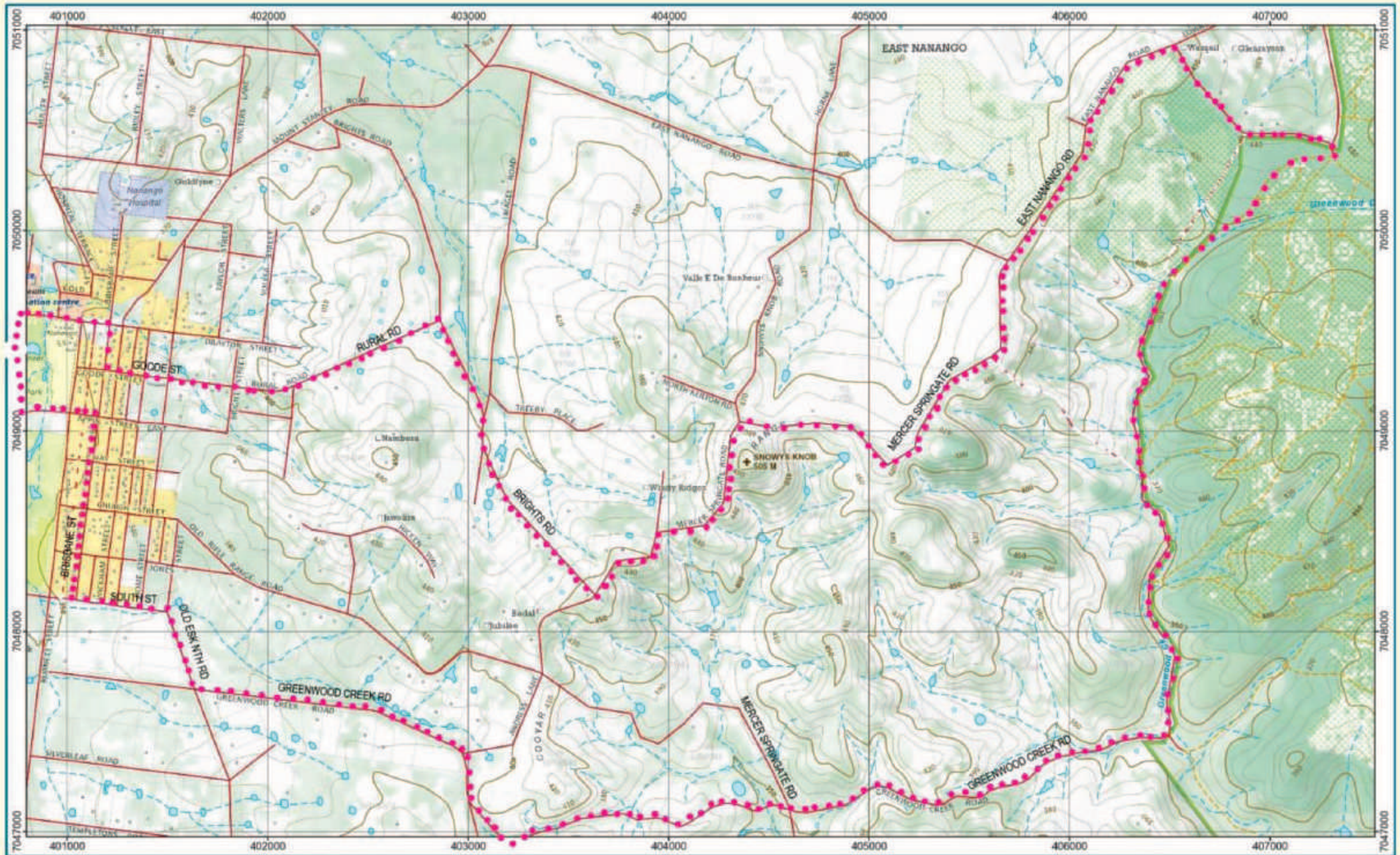
Nanango Cycling Inc.



GREENWOOD CREEK CIRCUIT RIDE

NAN2





QTOPO

1 : 25,000



Coordinate System: GDA 1991 MGA Zone 56
 Projection: Transverse Mercator
 Datum: GDA 1991
 Units: Metre

QTopo Map

QTopo has been compiled from the best information available to Queensland Government. The accuracy and reliability of this data is known to vary across the different scales. It is planned for this information to improve as more accurate data is sourced. The copyright in this publication is licensed under a Creative Commons Attribution 4.0 license, to share, copy, redistribute and adapt for any purpose, even commercially.

For more information on this licence, visit <http://creativecommons.org/licenses/by/4.0/>



The information contained herein is subject to change without notice. The Queensland Government shall not be liable for technical or other errors or omissions contained herein. The reader/user accepts all risks and responsibility for losses, damages, costs and other consequences resulting directly or indirectly from using this information.



All enquiries:
 e: opendata@dnrm.qld.gov.au
 Department of Natural Resources, Mines and Energy
 GPO Box 2151, BRISBANE QLD 4001
 © Commonwealth of Australia
 (Geoscience Australia) 2020

© The State of Queensland 2020.
 Produced by the Department of Natural Resources, Mines and Energy, June 2020



Queensland
 Government